



Where passion meets

**YOUR
LOGO
HERE**

al care excellence

Welcome to the (insert your name) Family!

Congratulations on welcoming your new puppy to your family! 🎉

From the moment this little one was born, they have been loved, nurtured, and carefully prepared for life in their forever home. Their home is with you. We are so excited for you to begin your journey together.

At Celestial Kennels, every puppy is raised not just to the highest welfare standards, but with real passion. We believe that bringing a puppy into your life should feel magical, and we work hard to give each puppy the best start. From daily cuddles to early socialisation, household noises, and so much more, your puppy has already had so many “firsts” with us — now it’s their turn to have “firsts” with you!

- ✨ Feeding schedule and socialisation checklist.
- ✨ Guidance on handling and a few special extras.

But the most important thing is that our support doesn't stop when you walk out the door. You're part of the Celestial Kennels family, and we'll always be here for advice, reassurance, and to celebrate milestones with you. We love updates, so please share photos and videos as your puppy grows — it means the world to us to see them thriving.

Your puppy's journey with you is just beginning, and we know they will bring endless joy, loyalty, and laughter to your home. Thank you for trusting us to provide your new best friend — we can't wait to see the adventures you'll have together.

With love and wagging tails,

Everyone at Celestial Kennels

✉️ katiemay@celestialkennels.co.uk | 🌐 celestialkennels.co.uk

Birth

C E R T I F I C A T E

WAS BORN ON Friday 25 AT 04:44 AM IN CRAWLEY

Celestial *Trixie*

TO Nereids AND Celestial Kennels B

ams

GENDER Female

Birth Certificate

KM Scott

CELESTIAL BREEDING

YOUR
LOGO
HERE

YOUR
LOGO
HERE

**YOUR
LOGO
HERE**

✨ Meet ✨

**YOUR
LOGO
HERE**

Name -

Breed-

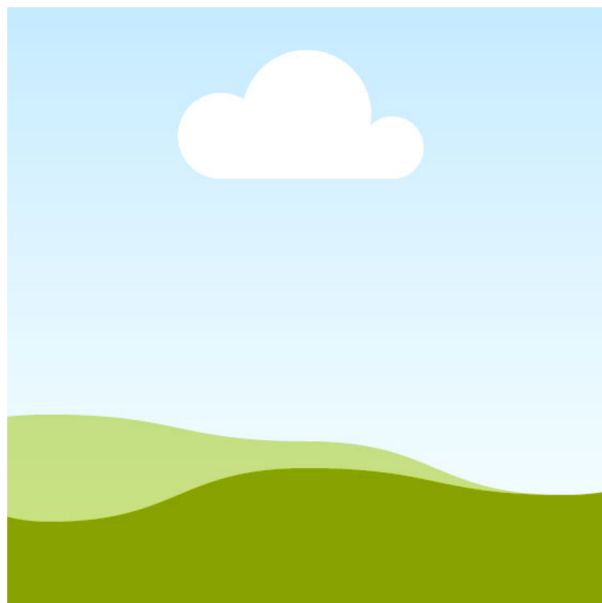
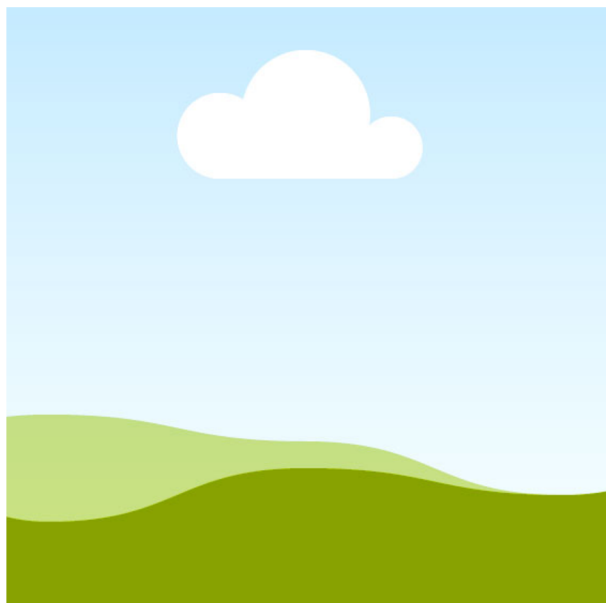
Sex -

Colour & Markings -

Date of Birth -

Microchip No. -

📷 Baby's First Photos





**YOUR
LOGO
HERE**

**PARENT
INFORMATION**



Meet Mum & Dad

💖 Mum –

✨ The devoted supermum!

Breed:

Age:

Personality:

💙 Dad –

✨ The handsome gentleman!

Breed:

Age:

Personality:

🐾 **Why We Paired Them**

**YOUR
LOGO
HERE**

**PUPPY HEALTH &
WELFARE**

YOUR
LOGO
HERE



Health & Welfare

YOUR
LOGO
HERE

Health and happiness are our top priority at Celestia. We'll tell you everything you need to know about their early care.

Vet Health Check

✨ Jessie has already had a full nose-to-tail health check with our trusted vets at Arthur Lodge Veterinary Services on Friday 15th August. Heart, lungs, eyes, ears, skin & joints all .

As seen on the vaccination card in this pack.

 Remember to bring your puppy to their 2nd vaccination — avoid dog parks and unvaccinated dogs.

Wormed at: 2, 4, 6 weeks. Please follow their advice on worming.

Already in the pack — please keep it safe. Transfer form is in your pack — please keep it safe for collection.


Your Health To Do

Register puppy


Book 2nd vac

Continue worming

Transfer microchip a

Keep puppy safe from high-risk areas until vac 

A Note From Us

Your puppy's health has been carefully looked after from day one. Weighing each day as a newborn, to vet checks, worming, and vaccinations, we've made sure they have the very best start. Now it's over to you to carry on their journey — and don't worry, we're here to help every step of the way!  ✨

YOUR
LOGO
HERE



Feeding & Care

YOUR
LOGO
HERE

Your puppy's tummy and routine are very important during the first few weeks at home. To make the transition easier, here's everything you need to know.



Feeding Routine

RECOMMENDED Puppy Dry Food

Flavor

Meal |

pm

Portion

Selection



Tip: Keep meals consistent for the first 7 days. Sudden changes can cause digestive issues.



How

If you'd like to switch

Days 1-2: 75% old food

Days 3-4: 50% old food

Days 5-6: 25% old food,

Day 7: 100% new food

YOUR
LOGO
HERE



General Care Guide

YOUR
LOGO
HERE

Sleep

Puppies sleep 18–20 hours per day.

Create a safe, quiet “puppy zone” or crate where they can rest undisturbed.

Toilet Training

Take puppy outside after eating, sleeping, or play. Praise and reward every success. Watch for accidents! Stay patient and never punish.

Exercise

Rule of thumb: 5 minutes of age, twice daily. Avoid long walks, running with older dogs, or stairs until puppy is mature (around 12–18 months depending on breed).

Grooming

Light grooming is fine. Use puppy-safe products. Occasional baths.

Puzzle feeders, soft toys, safe chew toys. Training sessions (sit, come, name recognition). Controlled introduction to new people and environments.

Owner's Care

Stick to feeding routine.

Provide fresh water at all times.

Begin gentle training (sit, recall) early.

Book puppy socialisation classes after 8 weeks.

Keep exercise short and age-appropriate.

Groom weekly & check nails, ears, and teeth.

Final Note

We've given your puppy the very best start here at Celestial Kennels, and now it's your turn to continue their journey. With love, patience, and consistency, they will grow into a happy, healthy member of your family. Remember — we're only a phone call away if you need advice!

YOUR
LOGO
HERE



Training & Socialisation

YOUR
LOGO
HERE

They've already started their learning journey here at Celestia, surrounded by new sights, sounds, and experiences, so they're already well-equipped with confidence. Now it's your turn to carry on the adventure! 🐾✨



Early Training Basics

Use positive reinforcement (praise, treats, play) to build confidence and trust.

Clicker training is never used. Here's what your puppy has started:

• Basic recognition – responding when called.

• Socialisation with gentle luring and treats.

✅ Hand signals: ears, teeth touched to prepare for vets/groomers.

• Regular walks outside regularly after meals/play.

💡 Tip: Keep training sessions short (5-10 mins) but frequent. Puppies learn best when it's fun!

So Far

You've introduced your puppy to:
• Household noises (vacuum, washing machine, TV)
• Meeting a variety of people (family, friends, neighbours)
• Gentle handling (ear, mouth, paws)
• Grooming (brush, nail clippers)



Socialisation Checklist (for 8-16 weeks)

Tick these off as your puppy grows — aim to introduce new experiences gradually

• Meet new people (family, friends, neighbours)

• Meet calm, vaccinated dogs

• Meet friendly strangers (different ages, appearances)

• Hear traffic noises 🚗

• Visit vet/groomer 🏥

• Walk on different surfaces (concrete, grass, gravel) 🚶

• Car rides 🚗

• Walk near bikes, pushchairs, umbrellas 🚲

• Play with safe toys & puzzles 🧩

• Be left alone briefly to practise independence 🏠

**YOUR
LOGO
HERE**



Enrichment Ideas

Puzzle feeders & snuffle mats.
Short training games (sit, down, recall).
Hide & seek with treats or toys.
Gentle tug & fetch games.

Exposure to safe household objects (pots, boxes, umbrellas).



Training Milestones (Goals for the First Year)

8–12 weeks: House training, crate training, name recognition, sit.

12–16 weeks: Recall, gentle lead walking, socialisation outings.

4–6 months: Stay, leave it, settle on a mat.

6–12 months: More advanced recall, manners around people/dogs, calm behaviour in public.



Final Note

Every puppy is unique — some will pick things up instantly, others may need more time.

Consistency, patience, and positive reinforcement are the keys to success. Remember: socialisation doesn't mean overwhelming your puppy; it means gentle, positive exposure to new things.

And don't forget — we love updates! Share your training wins with us; we're here to celebrate every paw-step of progress. 🐾🎉

**YOUR
LOGO
HERE**

**LEGAL &
DOCUMENTATION**

YOUR
LOGO
HERE

Legal & Documentation

YOUR
LOGO
HERE

At s, we believe in transparency and peace of mind. Every puppy leaves us with the correct paperwork, so you can feel confident that everything is above board and compliant with UK law.

Contract of Sale

Every puppy comes with a signed Contract of Sale. This outlines both our responsibilities as the breeder and yours as the new owner. Puppies are sold as family companions (pet homes only, unless otherwise agreed). The contract also includes our re-home policy — if you ever can't keep your puppy, they must come back to us.

Veterinary Records

Health check certificate

Vaccination card with dates and next boosters due.

Worming & flea treatment log from birth to collection.

Microchip

UK law requires all puppies to be microchipped before 8 weeks old. your puppy is currently registered to Celestial Kennels. Transfer form is included — please update this to your details within 14 days.

Insurance

We believe every puppy deserves a safe start, so your pack includes:
4 weeks of free puppy insurance with AGRIA

Owner's Legal Checklist

Sign & keep a copy of the Contract of Sale.

Transfer the microchip into your name.

Register with a local vet within 48 hours.

Keep vaccinations up to date.

Renew or continue your insurance after the free cover ends.

Why This Matters

This paperwork isn't just "admin" — it's your puppy's passport for life. It protects their welfare, your peace of mind, and ensures everything is done ethically and legally. At Celestial Kennels, we're proud to go above and beyond legal requirements to give every puppy the very best start.

Worming Chart

**YOUR
LOGO
HERE**

[illegible]

**YOUR
LOGO
HERE**

**PUPPY SALE &
OWNERSHIP
CONTRACT**

**YOUR
LOGO
HERE**

**PAYMENT PLAN
AGREEMENT**



**YOUR
LOGO
HERE**

**RETURN & RE-
HOME POLICY**

**YOUR
LOGO
HERE**

ADDED EXTRAS

Because leaving mum and littermates can feel like a big adventure, every puppy goes home with a bundle of familiar comforts and useful goodies.

Think of it as your puppy's very own "going home suitcase"! 🧳🐶✨

Comfort Items

Blanket with mum & siblings' scent – helps your puppy settle those first few nights by carrying the smell of home.

Favourite toy – something they've already played with here, to give them comfort and familiarity.

Starter Pack

Sample bag of food – the exact brand and flavour your puppy is currently eating, to help you keep them on the same diet at first.

Feeding guide – portion sizes and feeding times.

Personal Touches

Growth chart with weekly weights and milestones.

Photo timeline – a collage of your puppy from newborn to collection day.

Puppy diary

birth certificate

Why We Include These

Moving to a new home is exciting but also a big change. These extras help your puppy feel secure, give you useful tools to start off on the right foot, and show the love and care we put into raising every single litter.

**YOUR
LOGO
HERE**

ONGOING SUPPORT

When you take home a puppy from Celestial Kennels, you're not just getting a dog — you're joining our extended family. 🐾✨

We're committed to supporting you for your puppy's entire life.

Lifetime Breeder Support

You can contact us any time for advice on training, health, feeding, or behaviour. We're happy to answer "small" questions — from "is this poop normal?" to "what food should I switch to?"

Owner Community

You'll be invited to join our private Celestial Kennels Owners' Group. Share updates, photos, and ask questions with other families who have Celestial Kennels pups.

Rehome-Back Policy

If for any reason you can no longer keep your puppy/dog, they must come back to us. We guarantee a safe return home — no Celestial Kennels dog will ever end up in rescue. This policy is written into our Contract of Sale.

Follow-Up Care

We love to stay in touch! Expect a quick check-in from us in the first week, then at 1 month, and again at 6 months. We'll always be here if you need extra support.

Final Note

Your journey with your puppy has just begun, and we're so excited to see the adventures ahead. We're only ever a call or message away — because once a Celestial Kennels puppy, always a Celestial Kennels puppy. 🐾✨